



Jordan fishwick

Old Road Whaley Bridge High Peak



Old Road Whaley Bridge High Peak SK23 7LA

£350,000



The Property

A truly delightful and most deceptive, semi-detached Stone built cottage of character. Convenient, sought after location in Whaley Bridge and offering extended accommodation arranged over three floors to include: living room with wood burning stove, inner hall with storage, bathroom, contemporary re-fitted dining kitchen, two first floor double bedrooms (master with Juliet Balcony), shower room and second floor attic/study accessed by a spiral staircase. High quality fittings throughout, double glazing, gas central heating, off road parking, utility store and enclosed gardens. Viewing highly recommended.



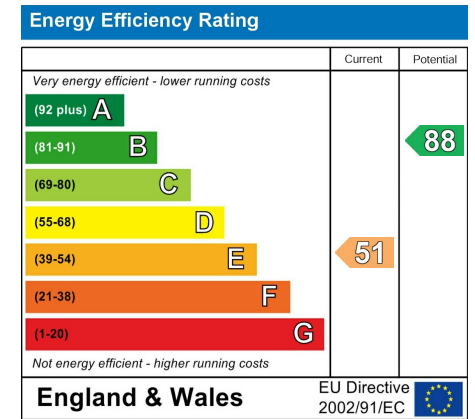
- Two Double Bedrooms Plus Loft Room
- Stone Built Semi-Detached
- Beautifully Presented Throughout
- Convenient Popular Location in Whaley Bridge
- Pvc Double Glazing and Gas Central Heating
- Off Road Parking and Gardens
- Bathroom And Shower Room
- Character Features
- Stone Outbuilding

Postcode SK23 7LA

EPC Rating E

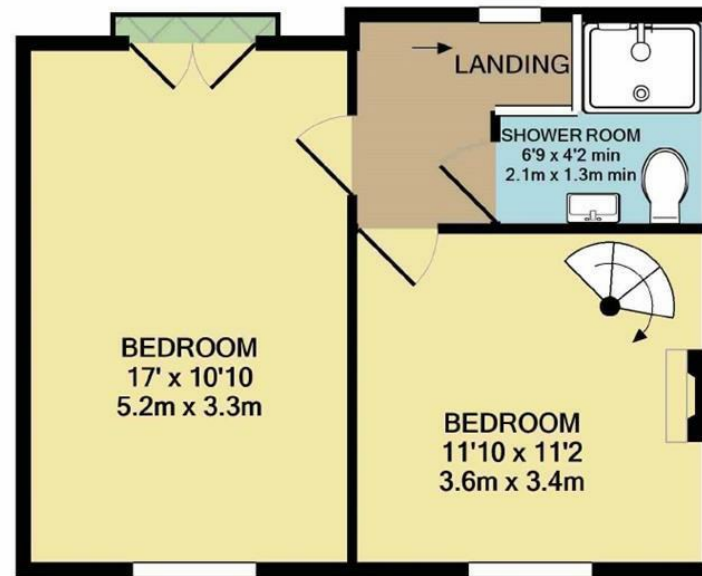
Local Authority High Peak

Council Tax B

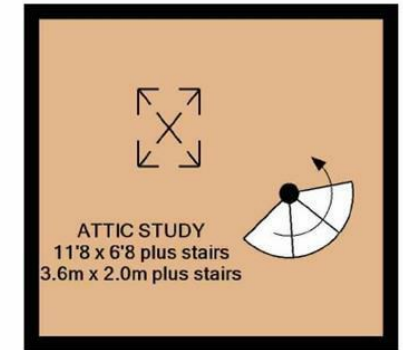




GROUND FLOOR



1ST FLOOR



2ND FLOOR

Whilst every attempt has been made to ensure the accuracy of the floor plan contained here, measurements of doors, windows, rooms and any other items are approximate and no responsibility is taken for any error, omission, or mis-statement. This plan is for illustrative purposes only and should be used as such by any prospective purchaser. The services, systems and appliances shown have not been tested and no guarantee as to their operability or efficiency can be given
 Made with Metropix ©2021



These particulars are believed to be accurate but they are not guaranteed and do not form a contract. Neither Jordan Fishwick nor the vendor or lessor accept any responsibility in respect of these particulars, which are not intended to be statements or representations of fact and any intending purchaser or lessee must satisfy himself by inspection or otherwise as to the correctness of each of the statements contained in these particulars. Any floorplans on this brochure are for illustrative purposes only and are not necessarily to scale.

Offices at: Chorlton, Didsbury, Disley, Hale, Glossop, Macclesfield, Manchester Deansgate, Manchester Whitworth Street, New Mills, Sale, Wilmslow and Withington

14 Market St, Disley, Cheshire, Stockport SK12 2AA

01663 767878

disley@jordanfishwick.co.uk

www.jordanfishwick.co.uk